

=> d his full

(FILE 'HOME' ENTERED AT 10:00:29 ON 15 NOV 2005)

FILE 'REGISTRY' ENTERED AT 10:00:38 ON 15 NOV 2005

```

L1          STRUCTURE UPLOADED
L2          50 SEA SSS SAM L1
L3          983 SEA SSS FUL L1
L4          STRUCTURE UPLOADED
L5          861 SEA SUB=L3 SSS FUL L4

```

FILE 'CAPLUS' ENTERED AT 10:03:09 ON 15 NOV 2005

```

L6          194 SEA ABB=ON PLU=ON L5
L7          0 SEA ABB=ON PLU=ON L6 NOT PY>=1991
L8          0 SEA ABB=ON PLU=ON L6 NOT PY>=1992
L9          0 SEA ABB=ON PLU=ON L6 NOT PY>=1994

```

FILE HOME

FILE REGISTRY

Property values tagged with IC are from the ZIC/VINITI data file provided by InfoChem.

STRUCTURE FILE UPDATES: 14 NOV 2005 HIGHEST RN 868046-42-8
 DICTIONARY FILE UPDATES: 14 NOV 2005 HIGHEST RN 868046-42-8

New CAS Information Use Policies, enter HELP USAGETERMS for details.

TSCA INFORMATION NOW CURRENT THROUGH JULY 14, 2005

Please note that search-term pricing does apply when conducting SmartSELECT searches.

```

*****
*
* The CA roles and document type information have been removed from *
* the IDE default display format and the ED field has been added, *
* effective March 20, 2005. A new display format, IDERL, is now *
* available and contains the CA role and document type information. *
*
*****

```

Structure search iteration limits have been increased. See HELP SLIMITS for details.

REGISTRY includes numerically searchable data for experimental and predicted properties as well as tags indicating availability of experimental property data in the original document. For information on property searching in REGISTRY, refer to:

<http://www.cas.org/ONLINE/UG/regprops.html>

FILE CAPLUS

Copyright of the articles to which records in this database refer is held by the publishers listed in the PUBLISHER (PB) field (available for records published or updated in Chemical Abstracts after December 26, 1996), unless otherwise indicated in the original publications. The CA Lexicon is the copyrighted intellectual property of the American Chemical Society and is provided to assist you in searching databases on STN. Any dissemination, distribution, copying, or storing

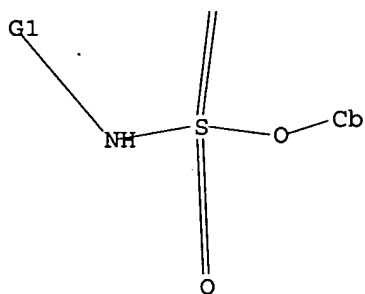
of this information, without the prior written consent of CAS, is strictly prohibited.

FILE COVERS 1907 - 15 Nov 2005 VOL 143 ISS 21
FILE LAST UPDATED: 14 Nov 2005 (20051114/ED)

Effective October 17, 2005, revised CAS Information Use Policies apply. They are available for your review at:

<http://www.cas.org/infopolicy.html>

=> d que stat l1
L1 STR



G1 H, Cy, Ak

Structure attributes must be viewed using STN Express query preparation.